

Job No.	34RF	Company	ACME DRILLING	Well	BORE No. 1	Field	BIG HORN	County	RUSS	State	AZ
File No.	234										
Location:	NORTH SECTION OF HIGHLAND RANCH						Other Services:		ELOG GRILL3		
Sec.	31	Twp.	2N	Rge.	8W	Elevation		0' above perm. datum			
Permanent Datum	G.L.		G.L.		G.L.		Elevation		K.B. G.L.		
Log Measured From	G.L.		G.L.		G.L.		Elevation		K.B. G.L.		
Drilling Measured From	G.L.		G.L.		G.L.		Elevation		K.B. G.L.		
Date	01-31-2000										
Run Number	ONE										
Depth Driller	1507'										
Depth Logger	1507'										
Bottom Logged Interval	1507'										
Top Log Interval	28'										
Casing Driller	N/A										
Casing Logger	N/A										
Bit Size	6 1/4"										
Type Fluid in Hole	BENTONITE										
Density / Viscosity	N/A										
pH / Fluid Loss	9.0										
Source of Sample	PIT										
Rin @ Meas. Temp	<1 @ 75F										
Rinf @ Meas. Temp	<1 @ 75F										
Rimc @ Meas. Temp	N/A										
Source of Rinr / Rimc	N/A										
Rin @ BHT	N/A										
Time Circulation Stopped	2 HR										
Time Logger on Bottom	10:15 PM										
Max. Recorded Temperature	N/A										
Equipment Number	PS-1										
Location	L.A.										
Recorded By	RIDDER										
Witnessed By	M. HERZOG										

<<< Fold Here >>>

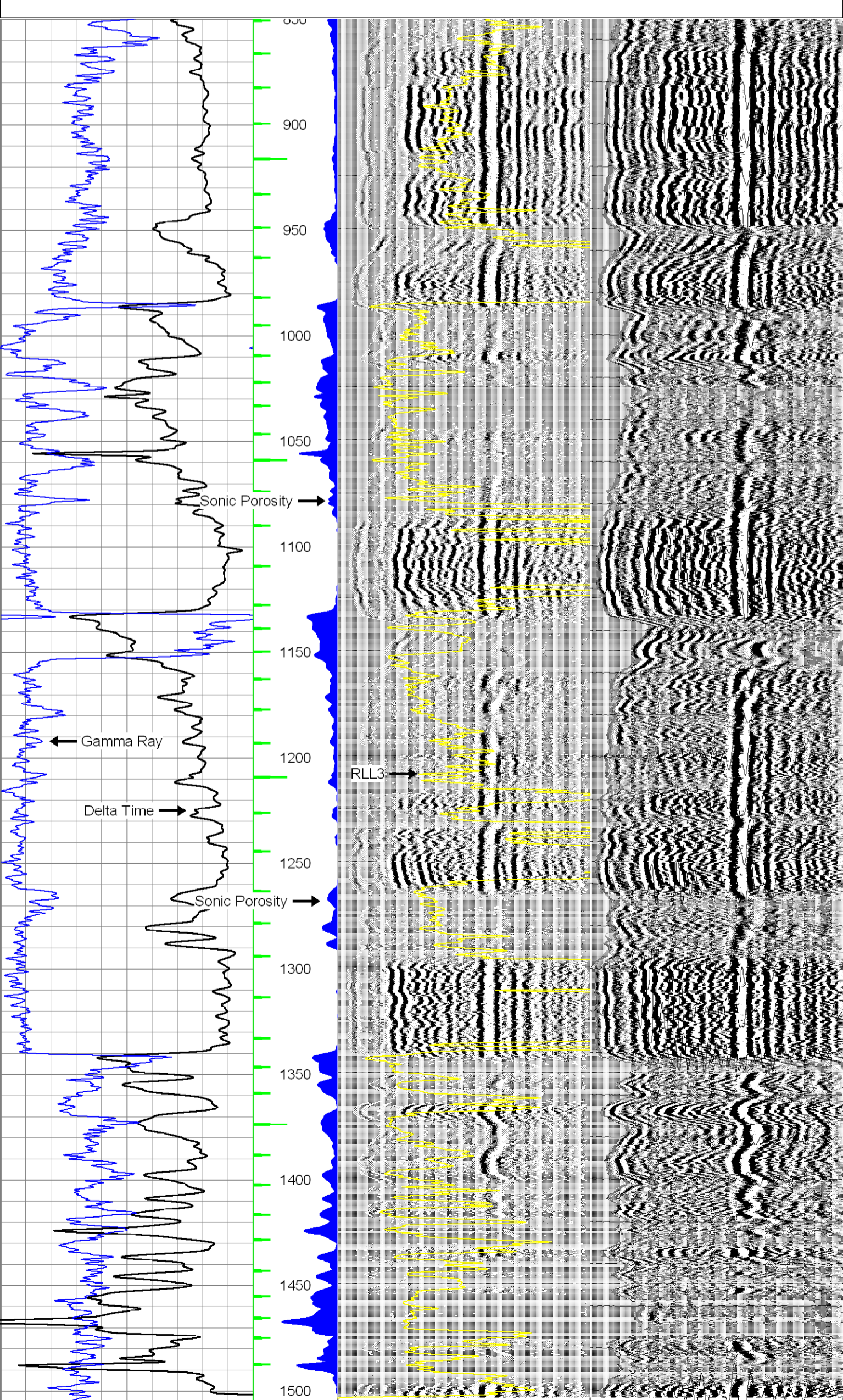
All interpretations are opinions based on inferences from electrical or other measurements and we cannot and do not guarantee the accuracy or correctness of any interpretation, and we shall not, except in the case of gross or willful negligence on our part, be liable or responsible for any loss, costs, damages, or expenses incurred or sustained by anyone resulting from any interpretation made by any of our officers, agents or employees. These interpretations are also subject to our general terms and conditions set out in our current Price Schedule.

### Comments

VARIABLE DENSITY RECORDED FROM 5FT RECEIVER

Database File: sonic.db  
 Dataset Pathname: Pacific/bore/SONIC/pass1  
 Presentation Format: slt  
 Dataset Creation: Fri Jun 11 11:47:54 2004  
 Charted by: Depth in Feet scaled 1:600

140	DT (usec/ft)	40	(SPOR (pu))	300	Variable Density 5 ft	1600	300	Variable Density 5ft	1600
10	Gamma-Ray (GAPI)	90	(ITT (msec))	0	RLL3 (Ohm-m)	100	300	Signature	1600



140	DT (usec/ft)	40	(SPOR (pu))	300	Variable Density 5 ft	1600	300	Variable Density 5ft	1600
10	Gamma-Ray (GAPI)	90	(ITT (msec))	0	RLL3 (Ohm-m)	100	300	Signature	1600