

SPINNER DOWN RUNS PUMPING CONDITION

Job No. T35E	Company ACME DRILLING	Well TEST No. 1	Field VERDUGO	County LOS ANGELES	State CA
File No. 6743	Other Services: STOP COUNTS FLUID VELOCITY SPINNER ANALYSIS				
Location: MAPLE @ SYCAMORE					
Permanent Datum	G.L.	Rge.	Elevation		
Log Measured From	G.L.	0	above perm. datum		
Drilling Measured From	G.L.			K.P. G.L.	Elevation
Date	11-27-02				
Run Number	ONE				
Depth Driller	830'				
Depth Logger	820'				
Bottom Logged Interval	817'				
Top Log Interval	585'				
Pump Set @	550'				
Time Pumping Prior to Survey	24 HRS				
Pumping Water Level	458'				
Max. Recorded Temp.	N/A				
Pump Rate (GPM)	3000				
Time Well Ready	08:00				
Time Logger on Bottom	08:10				
Equipment Number	PS-3				
Location	L.A.				
Recorded By	RIDDER				
Witnessed By					

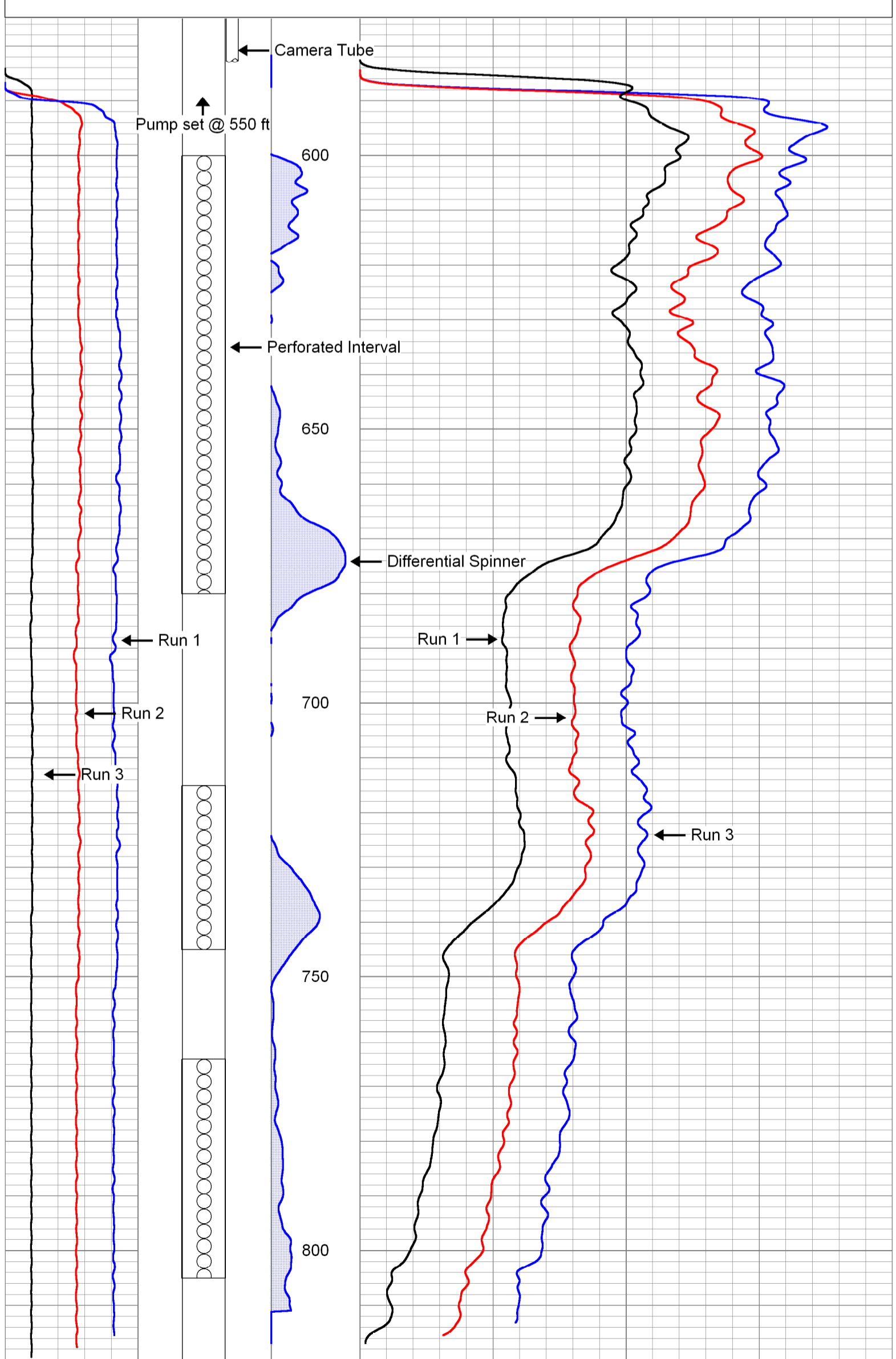
<<< Fold Here >>>

All interpretations are opinions based on inferences from electrical or other measurements and Pacific Surveys cannot and do not guarantee the accuracy or correctness of any interpretation, and we shall not, except in the case of gross or willful negligence on our part, be liable or responsible for any loss, costs, damages, or expenses incurred or sustained by anyone resulting from any interpretation made by any of our officers, agents or employees. These interpretations are also subject to Pacific Surveys' general terms and conditions set out in our current Price Schedule.

Comments

Database File: 10592.db
 Dataset Pathname: Pacific/Test1/run1/SPIN
 Presentation Format: spin
 Dataset Creation: Sat Jul 03 11:28:12 2004
 Charted by: Depth in Feet scaled 1:240

0	LS (ft/min)130	CSG SCHDL (ft)	(dspn (cps))	0	Spinner Down Run (cps)	80
0	LS (ft/min)130			0	Spinner Down Run (cps)	80
0	LS (ft/min)130			0	Spinner Down Run (cps)	80



0	LS (ft/min)130	CSG SCHDL (ft)	(dspn (cps))	0	Spinner Down Run (cps)	80
0	LS (ft/min)130			0	Spinner Down Run (cps)	80
0	LS (ft/min)130			0	Spinner Down Run (cps)	80